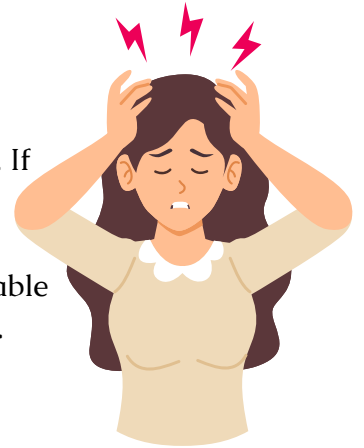


Living With Chronic Pain or Ongoing Health Conditions?

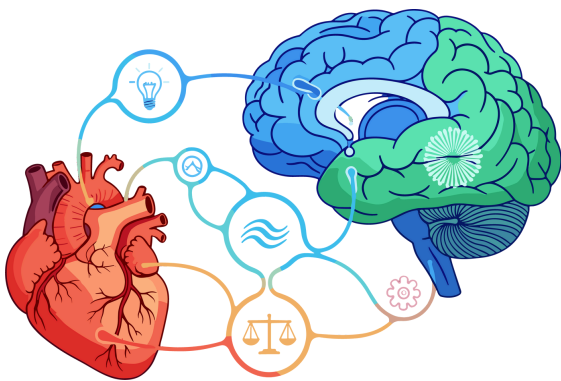


Living with chronic pain or a long-term health condition can be physically exhausting and emotionally draining. Many people notice feelings such as frustration, anxiety, low mood, grief, or disconnection alongside their symptoms. If this is your experience, you're not alone.



Counselling doesn't replace medical or physical treatment — but it can be a valuable part of a whole-person approach to managing pain and supporting wellbeing.

Pain is Real - and the Mind-Body Connection Matters



Pain is a genuine experience in the body. At the same time, pain is influenced by multiple interconnected systems, including the nervous system, stress responses, emotions, thoughts, and relationships.

When pain becomes persistent, the nervous system can remain in a heightened state of alert, which may amplify discomfort and make symptoms harder to settle. Counselling works with these systems — not to suggest pain is “all in your head,” but to reduce suffering and support regulation.

How Counselling Can Help

Counselling may support you to:

- Calm and regulate the nervous system
- Reduce the emotional burden of living with ongoing symptoms
- Work with anxiety, low mood, grief, or frustration related to health changes
- Explore how stress or past experiences may interact with pain
- Develop a more compassionate and trusting relationship with your body
- Feel more resourced, supported, and less alone

Many people report improved coping, greater emotional stability, and an increased sense of control — even when pain is still present.



What Counselling is Not



Counselling is not:

- Ignoring pain
- “Thinking positively”
- Pushing through or blaming yourself

Instead, it offers a respectful space to understand what your body and mind are responding to, and to learn ways of working with your system rather than against it.

Is Counselling Right For You?

You may benefit from counselling if you:

- Live with chronic pain, fatigue, or illness
- Feel overwhelmed, burnt out, or emotionally impacted by your condition
- Notice stress or emotions worsen symptoms
- Want support that considers the whole person, not just a diagnosis

You don't need to be in crisis to seek support.



Taking The Next Step

If you're curious about whether counselling could support you alongside your current care, a brief, no-obligation conversation can help you decide if it feels like the right fit.

Elysia Bullen Counselling & Wellbeing

Registered Counsellor & Psychotherapist | Master of Counselling

W: www.elysiabullen.com.au

E: enquiries@elysiabullen.com.au

Ph: 0414 932 783

In-Person & Online Appointments Available

